

WANDSWORTH ARTS FRiNGE

WANDSWORTHARTSFRiNGE.COM

17 JAM-PACKED
BELLY - LAUGHING
AWE-INSPiRING DAYS

9-27
JUNE





Marble Awareness



unbosi
UNITED IDEAS

**BE PART OF THE
INSPIRATION
REVOLUTION
IN WANDSWORTH**



Join us at the Marble Awareness Roadshow to help the United Nations Board of Significant Inspiration investigate inspiration levels in Wandsworth. Learn how marbles are making the world a more inspiring place, join in free activities, and help us prepare for a World Record breaking attempt!



Scan for info

**Marble Awareness Roadshow
11am - 4pm**

10th June - Tooting Broadway

17th June - St Mary's Square

24th June - Watch this space!

WAF IS BACK!

South West London's bold and boundary-pushing festival of arts and culture returns for 17 brilliant days, taking over Wandsworth from 9-25 June with a jam-packed, belly-laughing, awe-inspiring new line-up.

Discover an intimate festival of brand-new theatre at The Arches under Putney Bridge, and sparkling nights of comedy and cabaret at The Bedford (and beyond!).

Try a workshop in Peking Opera and Peruvian dance or catch a spectacular street performance from Autin Dance Theatre, featuring world-class puppetry and dance.

Wandsworth Arts Fringe dares artists and audiences alike to take a walk on the wild side and test something new.

Fringe-goers can hear the world's first opera in Sanskrit or explore the treasure trove of art hidden behind the front door of 575 Wandsworth Road.

There's something for everyone, with over 130 events and over two weeks of performances, exhibitions, and things to do. With loads of free stuff on offer, and tickets for live shows ranging from £0 - £20, everyone can fringe with us this summer.

Wandsworth Arts Fringe is brought to you by Wandsworth Council, supporting the arts and culture industries across the borough.



HOW TO FRiNGE

1. Try something bold, something new, something free, and something near you!
2. Once you've picked what you want to see, book tickets on our website wandsworthartsfringe.com or over the phone on **08442 439 475**.
3. Make the most of our multibuy offer: Get 30% off selected events when you book three different shows.
4. Stay up to date with all the latest Fringe news by signing up to our e-newsletter. Visit wandsworthartsfringe.com to subscribe.



WANDSWORTHARTSFRiNGE.COM



► USING THIS GUIDE

All events are grouped by area – look out for the colour coded banners in the brochure and online.



Looking for an event for the whole family? Keep an eye out for this symbol.

► ACCESS

We've made it easier for people looking for inclusive and accessible events to find something that meets your needs. There is a series of access symbols throughout the programme to identify events that provide the following services:



British Sign Language (BSL)



Audio description



Captioning



Mostly visual



Touch tour



Relaxed performance

For information about access performances or venue accessibility, visit: wandsworthartsfringe.com/access

Request a free carer ticket directly with our box office. Should you wish to request BSL interpretation, captioning or for any access-related questions email: artsaccess@wandsworth.gov.uk

► BOOK TICKETS

Book your WAF tickets now!

Book tickets online at wandsworthartsfringe.com or book over the phone on **08442 439 475**.

Phone booking is open Monday to Friday 10am to 8pm, and daily during the festival. Calls cost 7p per minute plus your telephone company's access charge.

Concession prices apply to: students, senior citizens, under 18s, Equity members and registered unemployed.

Binge on Fringe! Get 30% off when you book three different shows.

► FOLLOW US



@wandsworthartsfringe

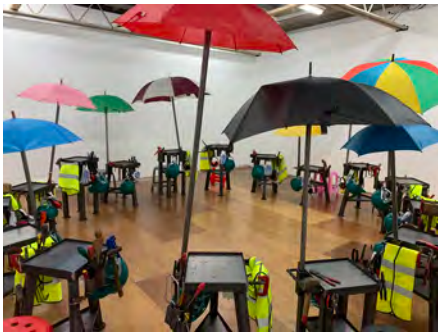


@wandsworthartsfringe



@waffringe





Katie Surridge Modern Mining

Using electrical waste collected from amnesty boxes and your own items brought to the workshop, join Katie Surridge at sculptural workstations to collect copper wire, steel, aluminium and other metals that are trapped in discarded electronic devices.

9 & 10 June, 11.00am – 5.00pm
Balham Library
16 Ramsden Road, SW12 8QY

Donations, no booking required



Tin Pan Annie Music The Unicornosaurus

Join Tin Pan Annie and Tin Pan Harry on a magical musical adventure with a cast of mixed up muddled animals where everyone is accepted no matter what they look like - just as long as they like to sing! Perfect for little folk and their grown ups.

10 June, 11.00am – 11.45am
Balham Baptist Church
21 Ramsden Road, SW12 8QX

£10/£5 concessions





Film on Film Entertainment Ltd
The Merry Wives

A modern day retelling of Shakespeare's 'The Merry Wives'. Young Princess Anne is forced to marry Prince Slender by her Royal parents, even though Slender is gay and feels the same way about Royal life as Anne.

12 June, 7.30pm – 9.00pm

The Bedford

77 Bedford Hill, Balham, SW12 9HD

Free, booking required



Kevin Martin Murphy
End of the World FM

15 years after the apocalypse has destroyed all of humanity, a lone radio host struggles to keep his show on the air. The host ponders, despairs and shines a light on the warning signs that spelled our doom. Is anyone listening? Have they ever..?

14 June, 7.00pm – 8.05pm

15 June, 8.30pm – 9.35pm

The Bedford

77 Bedford Hill, Balham, SW12 9HD

£10/£9 concessions



Instinct Pictures
SHADOWS

'SHADOWS' is a one-man show about mental health, depression and suicide prevention. True stories exploring masculinity from Nigeria.

14 June, 8.30pm – 9.25pm

15 June, 7.00pm – 7.55pm

The Bedford

77 Bedford Hill, Balham, SW12 9HD

£10/£7 concessions



The Baked Bean Charity
Beans on Film

A film festival curated for and by people with learning disabilities. Beans on Film will bring you tongue-in-cheek shorts, vibrant cameos, and some personal stories along the way, too.

15, 21 & 22 June, 6.00pm – 7.30pm

The Exhibit

12 Balham Station Road, SW12 9SG

Free, booking required



Phil Green

Millennial Bug (The Unbearable Weight of Social Expectation)

Are millennials the last generation to be trapped by parental expectations? Are the Sugababes responsible for a midlife crisis? Phil Green attempts to answer all these questions and chat about his love of dog-based reality TV.

15 June, 7.30pm – 8.15pm

The Bedford

77 Bedford Hill, Balham, SW12 9HD

£7/£5 concessions



Louise Atkinson

Mates

Love your mates but they're a drunken liability? Same, mate. Listen as Louise tells us about her mates. Good, bad and the ugly - though, the less said about Pete the better.

15 June, 9.00pm – 10.00pm

The Bedford

77 Bedford Hill, Balham, SW12 9HD

£7/£5 concessions



Joe and Jimmy

Out of the Frame: poems on paintings

A performance of poems, richly illustrated with famous paintings. Art from six centuries is brought dramatically to life through the imagined voices of the artists and the figures in their pictures.

22 June, 6.30pm – 7.30pm

Balham Baptist Church

21 Ramsden Road, SW12 8QX

£10/£8 concessions



Lost Souls

In Disguise with Open Mic

A unique and talented bunch of spoken word artists are performing for YOU and they are In Disguise!

Plus YOUR chance to be in the show with limited open mic slots available.

22 June, 7.00pm – 9.30pm

The Exhibit

12 Balham Station Road, SW12 9SG

£8/£6 concessions



Mirth of Forth Productions
It Just So Happened - an alternative history show

Award-winning stand-up comedian Richard Pulsford and three guest comedians / history buffs perform short stand-up sets based 'on this day' in history and explore the history of Wandsworth and Balham.

22 June, 7.00pm – 8.00pm

The Bedford

77 Bedford Hill, Balham, SW12 9HD

£9/£7 concessions



Marcus Morgan
CaBiRet - A Night Of The Bisexual Variety

'CaBiRet' is the community cabaret that's all about bisexuality - the music, the comedy, the performance, and the magic. Hosted by the U.K.'s only 'bisexual activist magician', CaBiRet is the perfect night out for bi+ people and friends.

22 June, 7.30pm – 10.30pm

The Bedford

77 Bedford Hill, Balham, SW12 9HD

Free, booking required



Mirth of Forth Productions
Richard Pulsford: Short Joke Teller

One-liners and light-hearted jokes from the UK Pun Championships Winner 2022 and Scottish Comedian of the Year Runner-up 2021. Dave's Top Ten Jokes Edinburgh Fringe in 2019, 2021 & 2022. "Quick, original and funny" (Broadway Baby, 2022).

22 June, 8.30pm – 9.20pm

The Bedford

77 Bedford Hill, Balham, SW12 9HD

£9/£7 concessions

MEG IN THE MAGIC TOYSHOP

It's first thing in the morning in the magic toyshop All the toys are still asleep... except for the little vintage doll Meg! Meg has lost her best glove and must find it before the shop opens or the window display will be ruined!

Balham Library

16 June, 4.00pm

Southfields Library

17 June, 1.15pm

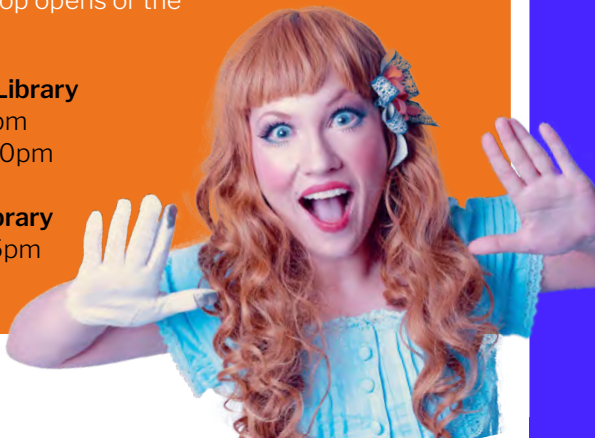
23 June, 12.00pm

Tooting Library

17 June, 10.00am

Earlsfield Library

23 June, 3.45pm



Vintage Vendetta Productions

£7.50

THE LITTLE RED HEN

The Little Red Hen lives on the farm with her mischievous animal friends. When her baby chicks hatch she needs to feed them. She is lucky enough to find 3 grains of wheat and decides to make some bread. But who will help her? an intimate interactive piece for 2-5 year olds with puppetry, storytelling, song and live music.

Earlsfield Library

10 June, 1.00pm

Battersea Library

23 June, 4.00pm

Tooting Library

10 June, 4.00pm

Balham Library

24 June, 2.00pm



The Puppetellers

£5

OUT OF THE DEEP BLUE

Autin Dance Theatre

The whirr of the wind cutting across a rocky beach, the whoosh of the waves lapping the shore... The illusion of calm is broken when Eko, a sentient Sea Giant, pads onto dry land. There he encounters a young girl called Violet. And that's where the story begins.

Through dance, movement and masterful puppeteering, Out of the Deep Blue dives into the themes of the climate emergency and the biodiversity crisis in an outdoor spectacle featuring a 13-foot-tall Puppet operated by world-class puppeteers and contemporary dancers. **Free.**

Bedford Hill Place

Balham, London, SW12 9RJ
24 June, 11.30am, 2.00pm & 4.30pm

Sellincourt Primary School

Sellincourt Road, Tooting, SW17 9SA
25 June, 11.30am, 2.00pm & 4.30pm





Beatrice Boivineau
Chinese and Japanese Calligraphy
Exhibition & Workshop

Discover the rich history of Chinese and Japanese calligraphy through an exhibition of selected masterpieces. Then on Fri 23 June write your first kanjis during an initiation workshop, and feel the deep serenity and beauty of the calligraphy.

9 - 25 June, various times (see website for details)

Battersea Library
 265 Lavender Hill, SW11 1JB

Free, no booking required



G23LAB
Cosmic Dance

A selection of works from G23LAB's Astrophysical series of astronomical capriccios depicting some real and theoretical wonders of the universe dancing far overhead in the deepest reaches of our own and other galaxies.

9 - 24 June, 9.00am - 10.00pm
 25 June, 9.00am - 8.00pm

Royal Academy of Dance
 188 York Road, SW113JZ

Free, no booking required



Carole Shaw
The Queen, Shakespeare and Me

Affectionate musical comedy tribute to the world's longest-serving monarch, a thoroughly modern, fully empowered female role model revealing her 'all' to her people. With free cake, biscuits, audience participation, Shakespeare, SingalongaLiz & quiz.

9 - 11 June, 3.45pm - 4.45pm

bbodance
 Ensign House, Battersea Reach, Juniper Drive, SW18 1TA

£10/£8 concessions



Providence House
Farm 2 City Community Open Day

Shallowford Farm is coming to Providence House! Meet the animals and take part in educational interactive activities exploring conservation, farming and the natural world. Bring your family and friends for free.

10 June, 10.00am - 4.00pm

Providence House
 138 Falcon Road, Battersea, SW11 2LW

Free, no booking required





ActionSpace Paint Live

ActionSpace artist Robin Smith presents Paint Live, a live painting event and exhibition with guest painters Thompson Hall and Richard Phoenix. The artists present recent work and paint live in a site-specific installation for the first time.

14 June, 11.00am – 4.00pm

15 June, 11.00am – 4.00pm

Battersea Arts Centre

160 Lavender Hill, London, SW11 5TN

Free, no booking required



London Children's Ballet Anne of Green Gables

London Children's Ballet are pleased to present a studio performance of last year's popular Anne of Green Gables. This version is danced by children aged 9-14 as part of LCB's June Touring Companies.

18 June, 2.30pm – 3.00pm

18 June, 3.30pm – 4.00pm

London Children's Ballet

Unit 2, 55 Lombard Rd, London, SW11 3RX

£5

THE MAGIC OF DANCE

Royal Academy of Dance celebrate the magic of dance with an open day of fun, dance performances, and activities for all. Creative ballet and South Asian Classical Dance workshops will be part of the morning activities for children and their families to enjoy, plus free arts and crafts activities and a showcase of performances from 3pm - 4.30pm.

Young Autistic dancers from MovementWorks present 'Artistes for Autism', 'Our Long Walk' is a multimedia collaboration between Weave Stories and D/deaf teenagers from Oak Lodge School, and Alison Ray Dance Company share an extract from 'The Unknown Soldier', which follows the stories of WWI & WWII's Black British War Veterans.



18 June, 10.30am – 4.30pm

Royal Academy of Dance

188 York Road, SW11 3JZ



Sound Minds Body Beautiful

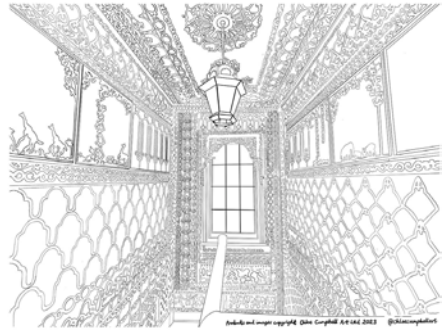
Sound Minds studio artists present 'Body Beautiful' at their Bloom Gallery space, a mixed media exhibition of painting, photography, collage, printmaking and sculpture, questioning our concept of beauty in the selfie society of today.

13 - 17, 20 & 23 June, various times (see website for details)

Sound Minds

Sound Minds, 20-22 York Road, SW11 3QA

Free, no booking required



Chloe Campbell Art The Art of Papercutting Workshop

Learn the art of papercutting at 575 Wandsworth Road, a Grade II-listed Georgian terraced house, which was turned into a work of art by Kenyan born novelist and civil servant, Khadambi Asalache.

13 June, 6.00pm – 8.00pm

14 June, 6.00pm – 8.00pm

575 Wandsworth Road (National Trust)

575 Wandsworth Road, SW8 3JD

£30/£20 concessions



Royal Academy of Dance & Share Community

Kubera Meets Ganesha

Share Community's artists collective has collaborated with the Royal Academy of dance to tell the ancient story of 'Kubera Meets Ganesha'.

14 June, 2.00pm – 3.30pm

Royal Academy of Dance

188 York Road, SW113JZ

Free, booking required



The Baked Bean Charity Beans on Film

A film festival curated for and by people with learning disabilities. Beans on Film will bring you tongue-in-cheek shorts, vibrant cameos, and some personal stories along the way, too.

14 June, 6.00pm – 7.30pm

Wilditch Community Centre

48 Culvert Road, Battersea, SW11 5BB

Free, booking required





Linda Foster Critical Moment

An evening of dance theatre produced, created and performed by older dance artists - Edgefield Dance Company, Power Dance & Co, Function of X and Grand Gesture - cultural activists presenting a personal/political response to life's critical moments.

15 June, 7.30pm – 9.00pm

Royal Academy of Dance
188 York Road, SW113JZ

£18/£14 concessions



Beatrice Boivineau Japanese body practice

Thanks to Japanese body practice, share the pleasure of moving and feeling your body relaxed, free, and alive! Through movement, feel joy and gratitude in being together, unified in one big family - the family of Life.

17 June, 10.00am – 12.00pm

Battersea Library
265 Lavender Hill, SW11 1JB

Free, no booking required



Overtone Theatre A Visit

'A Visit' is a small-scale immersive performance taking place in the home of Kenyan born poet and novelist Khadambi Asalache (1935-2006), who transformed his modest terraced house into a work of art.

17 June, every 30 minutes from 3.30pm – 5.55pm

575 Wandsworth Road (National Trust)
575 Wandsworth Road, SW8 3JD

Free, booking required



The Magic Garden The Kings Jazzy Birthday

A full day of many styles of Jazz from some of the UK's finest musicians.

17 June, 6.00pm – 11.30pm

The Magic Garden
231 Battersea Park Road, SW11 4LG

£7/£5 concessions



Black Heroes Foundation The Story of John Archer - Exhibition & Soul Food Cafe

A Black Heroes Soul Food Cafe event exhibiting children's work celebrating London's first Black Mayor, John Archer. An evening of song, dance and celebration, including audience participation and open mic.

17 June, 6.00pm – 7.30pm
Battersea Arts Centre
 160 Lavender Hill, SW11 5TN
£15/£10 concessions



Vineyard 61 Sacred Space

Experience a mixed media exhibition by local creatives, join in for your own moment of Sacred Space. A group of creatives have been meeting each week and responding to a prompt by creating from their skillsets their own moment of tranquility.

18 June, 5.00pm – 8.00pm
Providence House
 138 Falcon Road, Battersea, SW11 2LW
Free, no booking required



Fée Uhssi & National Trust's 575 Wandsworth road Feminine Power Art & Wellness workshop

A day of wellness, art and colour therapy workshops for local women at 575 Wandsworth Road. Facilitated by local artist Fée Uhssi on the theme of Feminine Power.

19 June, 11.00am – 1.00pm
 19 June, 2.00pm – 4.00pm
 19 June, 5.00pm – 7.00pm
575 Wandsworth Road (National Trust)
 575 Wandsworth Road, SW8 3JD
Free, booking required



E33 Dance Company CIC Life-cycles

In a varied and exciting programme of new works, E33 Dance Company present a multi-generational response to the beauty and fragility of our relationship with the natural world.

20 June, 7.00pm – 9.00pm
Royal Academy of Dance
 188 York Road, SW11 3JZ
£17/£12 concessions





Black Heroes Foundation The Story of Flip Fraser: A Windrush Story

Flip Fraser arrived in London from Jamaica aged 15. He was the first editor of the Voice Newspaper, and creator of the iconic theatre production Black Heroes in the Hall of Fame which celebrated 5,000 years of Black History in one night.

22 June, 7.00pm – 8.00pm
Battersea Arts Centre
160 Lavender Hill, SW11 5TN
£15/£10 concessions



Providence House Youth Entertainment Showcase (Y.E.S)

PH Media presents a night of youth entertainment and talent showcase in Battersea. Come and support the young people at Providence House with their live show featuring rappers, singers, dancers, poets and surprise guests.

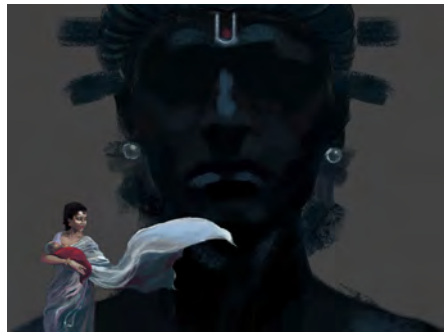
24 June, 7.00pm – 9.00pm
Providence House
138 Falcon Road, Battersea, SW11 2LW
Free, no booking required



London Independent Story Prize Creative Writing Workshop With Jessica Andrews - Hybrid

London Independent Story Prize present a hybrid live/online creative writing workshop with award-winning author Jessica Andrews. The event is open to all levels of writers and is free of charge.

25 June, 11.00am – 2.00pm
Royal Academy of Dance
188 York Road, SW113JZ
Free, booking required



Jataneel Banerjee Gaṅgā

A chamber opera in Sanskrit. The legend of Gaṅgā is a story of love, promise and heartbreak from Mahabharata. She is a powerful yet a helpless celestial river goddess whose womb becomes the medium to fulfil the higher purpose of gods and men.

25 June, 3.00pm – 4.30pm
Royal Academy of Dance
188 York Road, SW113JZ
£15/£12 concessions





Bounce Theatre Into the Forest - Exhibition

Celebrating traditional tales and the environment, watch a forest made out of reused and reclaimed materials grow around the Home Cafe in Earlsfield.

12, 14, 16, 19, 21 & 23 June, 9.00am – 4.00pm

Home Community Cafe

St Andrew's Church, 571 Garratt Lane,
Earlsfield, SW18 4SR

Free, no booking required



Jake Rodrigues Froggy's Famous Fanclub

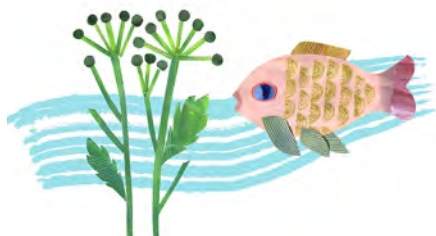
Froggy's Famous Fanclub is a celebration of interactions for early years children with their parents or carers. Using songs and games, props, puppets and stand up comedy Froggy's is unlike any other childrens music event you'll go to.

12 & 19 June, 10.00am – 11.00am

Home Community Cafe

St Andrew's Church, 571 Garratt Lane,
Earlsfield, SW18 4SR

£8.00



Wandle Community Collage Collage workshop: the Wonderful Wandle

Join illustrator Jane Porter to make your own individual collage contribution to a giant mural project celebrating our local river Wandle.

17 June, 12.00pm – 3.00pm

Kimber Skatepark

Kimber Road, SW18 4NY

Free, no booking required



ARRTI GALLERY presents Something About London Exhibition

ARRTI GALLERY invite you to see their new art collections in an intimate gallery space, and in their own studios, at Delta House Studios and Wimbledon Art Studios.

23 June, 11.00am – 6.00pm

24 June, 11.00am – 6.00pm

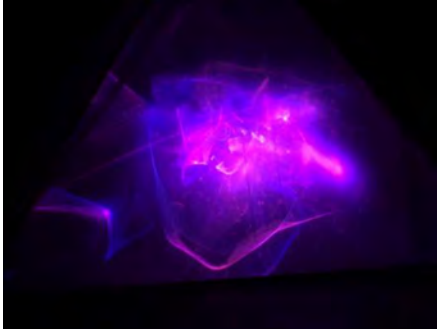
25 June, 11.00am – 6.00pm

Delta House Studios

Riverside Road, SW17 0BA

Free, no booking required





G23LAB

What Dreams May Come?

When I was young I wanted to be an astronaut. That never happened, but now I've got my very own spaceship, the sky's the limit once again. Join us from sunset to ride on this hypnotic mix of light and sound, and dream of wonders past and yet to come.

9 - 11 & 13 - 25 June, 9.00pm - 11.59pm

Battersea Power Station
Circus West Village, SW11 8AH



Free, no booking required



Manasi (History Speak)

Art and Architecture Walking Tour of Battersea & Nine Elms

Did you see a pig fly and couldn't believe your eyes? The largest development project in Europe has some old stories. Explore Battersea and Nine Elms with a guided walk from the US Embassy to Battersea Power Station.

11 & 17 June, 10.30am - 12.30pm; 13 June, 2.30pm - 4.30pm; 15 & 23 June, 6.30pm - 8.30pm

Rainbow Plaque - My Beautiful Laundrette
11 Wilcox Road, Nine Elms, SW8 2XA
£11/£8 concessions

BiNGE ON FRiNGE!

BOOK 3 EVENTS GET 30% OFF

* **SELECTED SHOWS AND WORKSHOPS**



World Heart Beat Embassy Gardens Endz Jazz Soul

The Oracle Collective, in collaboration with World Heart Beat, presents Endz Jazz Soul, a concert showcasing the best emerging musicians from across London.

15 June, 6.30pm - 9.30pm

World Heart Beat Embassy Gardens
3 Ponton Road, SW11 7BD

£6.50

NINE ELMS

Happy Streets FESTIVAL

Saturday 15 July • 12 noon - 6pm

A FREE one-day festival
for all the family

Thessaly Road
and local area, SW8



★ Crafts and activities

★ Live music
★ Dance

★ Pizza-making
★ Wellbeing sessions



nineelmslondon.com/happystreets2023

 @nineelmsteam
 @nineelmslondon
 @nineelmslondon



Supported using public funding by
ARTS COUNCIL
ENGLAND





World Heart Beat Embassy Gardens The Oracle Collective Workshop: Getting into the music industry

Join The Oracle Collective for two back to back workshops exploring life in the music industry. First up, an in-depth look at the UK music scene. Followed by, a production taster workshop making and producing quality music.

16 June, 3.00pm – 5.00pm

World Heart Beat Embassy Gardens
3 Ponton Road, SW11 7BD

Free, booking required



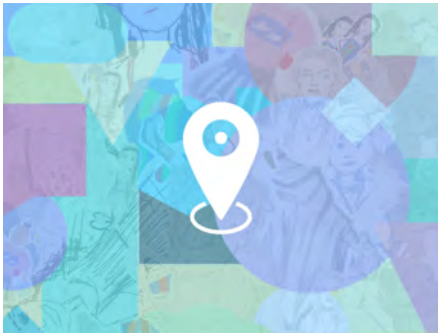
Green Curtain Theatre The Power and The People

Battersea Power Station's eventful history, re-told and dramatised through personal stories and memories - of work, home life, migration and community.

17 June, 12.00pm, 2.30pm & 4.45pm

R.O.S.E Community Clubroom
Ascalon Street, Battersea, SW8 4D

£10/£8 concessions



MAT Society Une Petite Hiroba

Multicultural Applied Theatre society presents a devised multilingual show set in a little village where everybody looks, sounds and acts differently. A celebration of cultural diversity on the boat, where we are connected by water.

18 June, 2.00pm – 3.15pm

Battersea Barge
Nine Elms Lane, SW8 5BP

£10.50/£6.50 concessions



Fée Uhssi Goddess Power Fashion & Art Show

An art and catwalk show showcasing Fée Uhssi's Art of Fashion Wrapping ethical capsule collection, alongside bespoke upcycled jewellery and accessories created with a group of women from Battersea and Wandsworth.

24 June, 5.30pm – 9.00pm

Nine Elms Pavilion
Off Nine Elms Lane, Opposite US Embassy,
Riverside Walk, SW8 5DF
Free, no booking required





The Thermos Museum The Thermos Museum

An eccentric guide escorts the public around a surreal exhibition, designed to surprise and astound.

9 - 21 June, 3.00pm - 3.45pm, 4.00pm - 4.45pm

The Arches at St Mary's Church
High Street, Putney, SW15 1SN

£7/£4 concessions



Group 64 Theatre for Young People JOY

JOY is a powerful, thought-provoking and timely piece of theatre that shares the experiences of young people in 2023 and asks what it is to be joyful in this chaotic world?

9 June, 6.00pm - 7.00pm

9 June, 8.00pm - 9.00pm

Putney Arts Theatre
Ravenna Road, Putney, SW15 6AW

Free, booking required





New Stagers Scene Unseen

Scene Unseen is a unique production of original theatre from local drama group New Stagers, featuring six new short plays, all written, produced and staged by our members!

10 June, 2.30pm – 4.00pm, 5.30pm – 7.00pm
11 June, 1.00pm – 2.30pm, 4.00pm – 5.30pm

The Arches at St Mary's Church
High Street, Putney, SW15 1SN
£8/£6 concessions



DoDo DRAMATICS Queen of the East

A faraway ancient adventure filled with extravagant tales and misleading puppets! Whose story can we trust, and whose lives must be lost? Join us for a sustainable, family-friendly musical to discover what really happened to the last Queen of Egypt.

11 & 18 June, 12.00pm, 2.00pm, 4.00pm
The Arches at St Mary's Church
High Street, Putney, SW15 1SN

£7.5/£5 concessions



D-Fen Writers Collective Recollections May Vary

Sit back under the arch for an hour of tales to intrigue, amuse and provoke. Stories of crossed wires, false memories and misunderstandings. You'll meet characters to love and despise, fear and admire, envy and pity, and that's just the writers!

11 June, 6.30pm – 7.30pm, 8.00pm – 9.00pm
The Arches at St Mary's Church
High Street, Putney, SW15 1SN

£5/£4 concessions



Susie Nathanson & Stella Tooth Performers in Paint Art Exhibition

A portrait exhibition of artworks by Susie Nathanson & Stella Tooth, celebrating the musicians, dancers and variety acts that have inspired them. Full of uplifting colour, entertaining characters and wonderful stories.

14, 15, 21 & 22 June, 9.00am – 8.00pm
16, 17, 23 & 24 June, 9.00am – 5.00pm
18 & 25 June, 1.00pm – 5.00pm

Putney Library, 5/7 Disraeli Road, SW15 2DR
Free, no booking required





I'MNOTAROBOT Productions
Scratch Night

A variety of performances from emerging creatives! Catch these snippets of new theatre, from comedy to drama. Brand new writing coming to audiences on this stage.

12 June, 7.00pm – 8.30pm
The Arches at St Mary's Church
High Street, Putney, SW15 1SN

£5

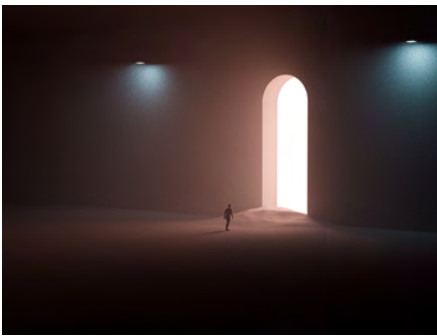


Heather Antonia
Deadball

Deborah doesn't just like cricket, oh no, she loves it. So come and join her as she teaches you all about the "Gentleman's game". A comedy-tragedy that uses clowning and audience participation to explore the impact of a loved career being taken away.

13 & 14 June, 7.00pm – 8.00pm
The Arches at St Mary's Church
High Street, Putney, SW15 1SN

£10/£9 concessions

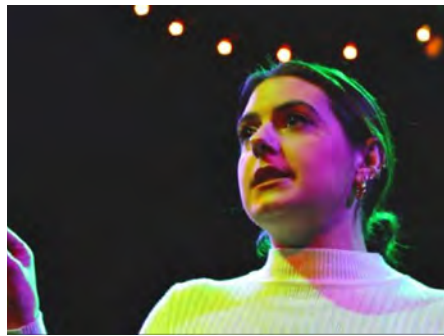


David O'Mahony
The Prison

A new play from writer and director David O'Mahony, 'The Prison' is a dark, twisting psychological drama where nothing is what it first seems.

13 & 14 June, 8.30pm – 10.00pm
The Arches at St Mary's Church
High Street, Putney, SW15 1SN

£10/£9 concessions



CheapArt
Deck The Stalls

Serena's office Christmas Party is tragic, like beyond tragic. She's locked herself in the toilet because, seriously, f*ck HR Sandra's forced fun. Filled with humour, fun and a sack full of heart, 'Deck The Stalls' is sure to be a great night out!

15 & 16 June, 7.00pm – 8.00pm
The Arches at St Mary's Church
High Street, Putney, SW15 1SN

£10/£9 concession



Dylan Harvey
Dead Serious

How well do you truly know yourself? In a post-lockdown world, 'Dead Serious' is a journey of self-discovery, of learning to be comfortable in your loneliness, and re-learning what makes meaningful human connections in a time struck by isolation.

15 June, 8.30pm – 9.15pm
The Arches at St Mary's Church
High Street, Putney, SW15 1SN

£10/£9 concessions



Alex John
Everyone's Worried About Eve

Welcome to the pilot episode of the new sitcom 'Everyone's Worried About Eve' full of laughs and a cracking soundtrack. We follow Eve as she navigates her sitcom world with silly and disastrous consequences.

17 June, 7.00pm – 8.00pm
The Arches at St Mary's Church
High Street, Putney, SW15 1SN

£10/£9 concessions

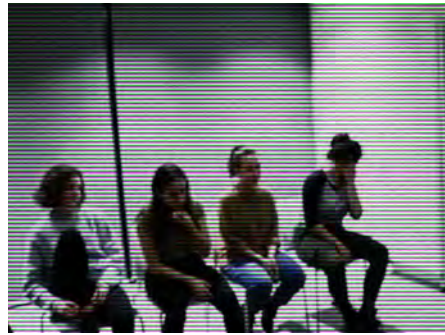


jodY
WARR;OR

WARR;OR is a gritty and passionate coming-of-age debut solo show by performance poet jodY, whose wordplay fused with lyrical narration uniquely brings to life his arduous battle with mental health and trauma.

18 & 19 June, 7.00pm – 8.15pm
The Arches at St Mary's Church
High Street, Putney, SW15 1SN

£10/£9 concessions



Megan Earl
The Moral Women

A dystopian drama set in the lead up to a raid of an illegal abortion clinic.

18 June, 8.30pm – 9.45pm
The Arches at St Mary's Church
High Street, Putney, SW15 1SN

£10/£9 concessions



I'MNOTAROBOT Productions Spoken Word Night

Welcome to I'MNOTAROBOT Production's first Spoken Word night, featuring both new and experienced spoken word artists, with dazzling brand new material.

19 June, 8.30pm – 9.30pm
The Arches at St Mary's Church
High Street, Putney, SW15 1SN

£5



PINCHY Theatre It's a Mad, Mad, Mad, Madge

Samuel Pepys called her 'a mad, conceited, ridiculous woman'. They all called her 'Mad Madge'. We'd call her Margaret Cavendish. Her plays were never performed in her lifetime, to make up for it, we're giving Madge her own one-woman musical.

16 & 17 June, 8.30pm – 9.30pm
The Arches at St Mary's Church
High Street, Putney, SW15 1SN

£10/£9 concessions



Hettie Smith Just to be Safe

She's taking a pregnancy test to be safe. She's not worried. Everything's going to be fine...she hopes. 'Just to be safe' is a solo performance exploring many aspects of human connection, told from the perspective of a girl who loves love.

20 & 21 June, 8.30pm – 9.30pm
The Arches at St Mary's Church
High Street, Putney, SW15 1SN

£10/£9 concessions



Stage D'Or Chet Baker: Let's Get Lost

It is 1956 and Chet Baker has it all. Young, handsome, a gifted jazz trumpeter with a haunting voice, his record sales are huge and he has just finished his first movie. And he's about to throw it all away.

20 & 21 June, 7.00pm – 8.30pm
The Arches at St Mary's Church
High Street, Putney, SW15 1SN

£10/£9 concessions



Athena Amoret CHICK-IN SHOW

Athena Amoret presents her one-woman, feminist, clown theatre show highlighting the objectification of the female body, whilst wearing rubber gloves on her feet.

22 June, 8.30pm – 9.25pm
The Arches at St Mary's Church
High Street, Putney, SW15 1SN

£10/£9 concessions



Pajoda Theatre Company The Gloomy Octopus Story

Set in an aquarium, 'The Gloomy Octopus Story' is a play about grief and mental health. Stevie only wants to share magical stories with their imaginary friend, Lanny, but something is wrong in the real world and Stevie has to face the truth.

22 & 23 June, 7.00pm – 8.30pm
The Arches at St Mary's Church
High Street, Putney, SW15 1SN

£10/£9 concessions



Square One Entertainment With Love, Juliet

Juliet is a world famous drag performer who only ever needed the spotlight. Now she prepares for her greatest performance yet: her Grand Finale. How can her farewell performance be completely unforgettable?

24 June, 7.00pm – 8.00pm
The Arches at St Mary's Church
High Street, Putney, SW15 1SN

£10/£9 concessions



I'MNOTAROBOT Productions Creatives Social Event

A chance for creatives to meet, socialise and discuss their work with other artists. Join us at our riverside bar, enjoy the views and make new friends and contacts!

25 June, 6.30pm – 8.30pm
The Arches at St Mary's Church
High Street, Putney, SW15 1SN

Free, no booking required



Kevin Martin Murphy
End of the World FM

15 years after the apocalypse has destroyed all of humanity, a lone radio host struggles to keep his show on the air. The host ponders, despairs and shines a light on the warning signs that spelled our doom. Is anyone listening? Have they ever..?

23 & 24 June, 8.30pm – 9.35pm
The Arches at St Mary's Church
High Street, Putney, SW15 1SN

£10/£9 concessions



Putney Theatre Company
Sense and Sensibility

In Jessica Swale's delightful theatrical adaptation of Jane Austen's dearly-loved classic, we follow the fortunes of Elinor and Marianne as they chase their dreams from Devonshire to London and back.

20 – 24 June, 7.45pm – 10.15pm
Putney Arts Theatre
Ravenna Road, Putney, SW15 6AW

£16/£12 concessions



Susie Nathanson
Salsa Dancing, A Beginner's Workshop

A fun and friendly introduction to Salsa Dancing! No previous experience required. Instructed by Susie Nathanson who teaches with Incognito Dance, a long-established company offering salsa and bachata classes and clubs nights in Southwest London.

22 June, 5.30pm – 7.30pm
Putney Library
5/7 Disraeli Road, SW15 2DR

£12/£10 concessions



Lost Souls
In Disguise with Open Mic

A unique and talented bunch of spoken word artists are performing for YOU and they are In Disguise!

Plus YOUR chance to be in the show with limited open mic slots available.

15 June, 7.00pm – 9.30pm
St Mary's Church
High Street, Putney, SW15 1SN

£8/£6 concessions



The Perspective Collective
Dark Places

The Perspective Collective invites you on a journey into some dark places through song and opera. At the end of the road, we may encounter the devil himself in the UK premiere of Stephanie Leotsakos's mini-opera adaptation of Young Goodman Brown.

22 & 23 June, 8.00pm – 9.00pm
St Mary's Church
High Street, Putney, SW15 1SN

£10/£7 concessions



Stella Tooth & Susie Nathanson
A Dance & Costume Themed Life Drawing Workshop

A special dance & costume themed life drawing workshop, expect dynamic and powerful poses! Taught by V&A, Tate Britain and National Portrait Gallery drawing tutor Stella Tooth. Featuring Susie Nathanson as model.

24 June, 2.00pm – 4.00pm
Putney Library
5/7 Disraeli Road, SW15 2DR

£12/£10 concessions



Group 64 Theatre for Young People
Alton, a place I call home

A multi-generational theatre project created and performed by the residents of the Alton Estate, celebrating their stories and offering an exciting insight into the past, present and future of Alton.

25 June, 7.45pm – 8.45pm
Putney Arts Theatre
Ravenna Road, Putney, SW15 6AW

Free, booking required



Torn to Ribbons Dylan Dodds & Friends 2 (Friends Still Not Included)

For 8 years, Dylan Dodds (comedian) has written a blog about Friends (sitcom). Now he presents his findings so far... How have things changed since the 90s? How does his life compare to Friends? And is the show still even any good??

9 June, 8.00pm – 8.50pm

Alton Arts Hub

6 Portswood Place, Roehampton, SW15 4ED

£5/£3 concessions



The Shakespeare Edit MACBETH (a mind diseased)

MACBETH (a mind diseased) is a portrait of a psychotic state of mind, of murderous delusion and paranoia. Developed with Ukrainian composer Dmitriy Saratsky, with movement by Cheska Bridge, directed and performed by Paul Goodwin (50 minutes)

24 June, 8.00pm – 8.50pm

Holy Trinity Church Roehampton

Ponsonby Road, Roehampton, SW15 4LA

£10/£5 concessions



Group 64 Theatre for Young People Alton, a place I call home

A multi-generational theatre project created and performed by the residents of the Alton Estate, celebrating their stories and offering an exciting insight into the past, present and future of Alton.

10 June, 2.00pm – 3.00pm, 4.00pm – 5.00pm

Downshire Field (Bull Green)

Alton Estate, London, SW15 4DY

Free, no booking required



Sol Golden Sato Happy Puffs - Alton

Come and help make London's first community led social and colour therapy sculpture. Happy Puffs is a series of fun installation and sculpture making workshops with colourful mesh that will end with us all making London's largest public artwork.

12 – 16 June, 2.00pm – 5.00pm

Alton Arts Hub

6 Portswood Place, Roehampton, SW15 4ED

Free, no booking required



ROEHAMPTON



Evelina De Lain and Katya Lazareva Piano/Viola Duo

An evening with renowned violist Katya Lazareva and composer, pianist and world record holder Evelina De Lain will introduce you to a wide range of classical, romantic, 20th century and original jazz and contemporary music.

15 June, 7.30pm – 9.30pm

Holy Trinity Church Roehampton
Ponsonby Road, Roehampton, SW15 4LA

£20/£12 concessions



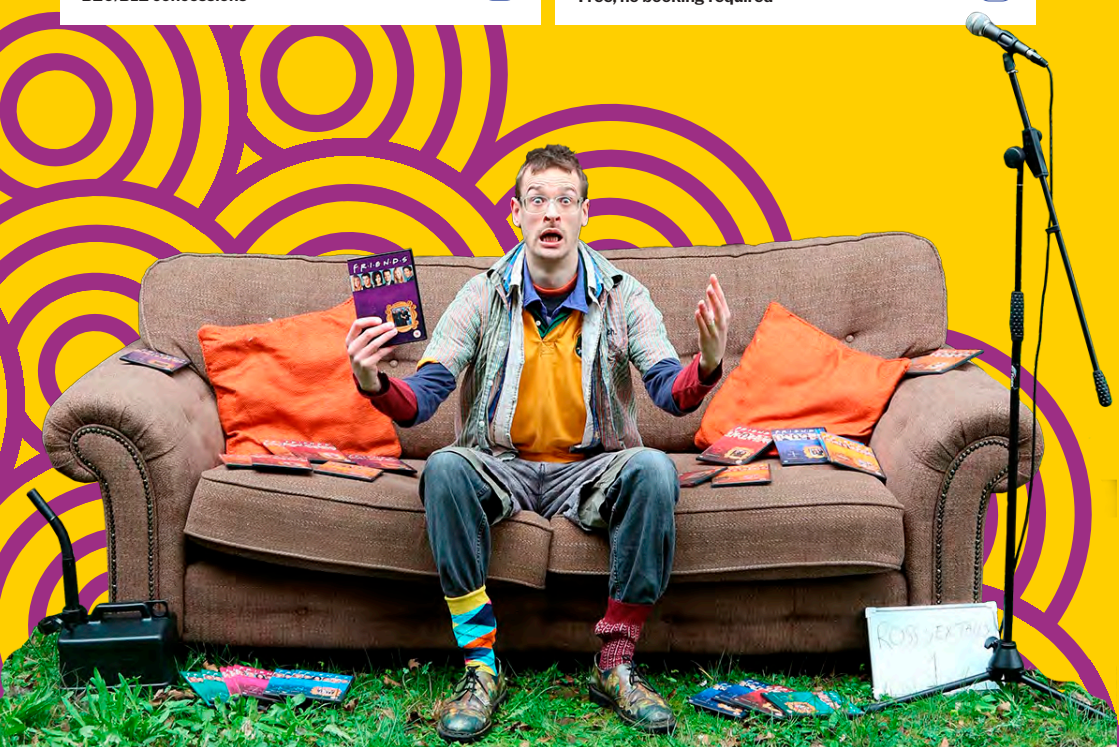
Hallomai Dance Joy is Ours

Hallomai Dance explores what makes us joyous in our daily lives in outdoor interactive performance, Joy is Ours. Watch as four dancers play, connect and get tangled-up in a GIANT scrunchie in this fun pop-up performance. Dance with us!

16 June, 3.30pm – 3.50pm, 4.15pm – 4.35pm

Downshire Field (Bull Green)
Alton Estate, London, SW15 4DY

Free, no booking required





Improvesarios Improvised Opera

Take the opera-tunity to experience an all-new completely off-the-cuff musical extravaganza! The Improvesarios will take your suggestions and form an improvised opera. No experience needed, no music provided and no clue what will happen next!

18 June, 6.00pm – 8.00pm

Holy Trinity Church Roehampton
Ponsonby Road, Roehampton, SW15 4LA

£8/£5 concessions



Grow Roehampton Street Band Street Band Procession

The Grow Roehampton Street Band is back! Come and process through the streets of Roehampton as 50 children from schools in Roehampton play specially composed and arranged music down Danebury Avenue. Expect a colourful, creative performance!

19 June, 5.00pm – 6.00pm

Roehampton Library
2 Danebury Avenue, SW15 4HD

Free, no booking required



Casper Dillen Long Tennis

A 50 minute live performance. Visual dance theatre. Performed and choreographed by mother and son. Set in the historical context of lockdown and from the perspective of dancing in the kitchen. 'Waiting for Godot' as a dance piece.

23 June, 7.00pm – 7.50pm

Holy Trinity Church Roehampton
Ponsonby Road, Roehampton, SW15 4LA

Free, no booking required



Isobel Sutherland Yoga Adventure - Under The Sea

Join Izzy from On The Clouds Kids as she combines children's yoga with storytelling techniques on this epic Under The Sea adventure! Expect to join in with your little ones as we meet balancing pirates, big starfish and topsy turvy mermaids!

25 June, 2.00pm – 3.00pm

Alton Arts Hub
6 Portwood Place, Roehampton, SW15 4ED

£5



TOOTING AND FURZEDOWN



Jake Rodrigues Froggy's Famous Fanclub

Froggy's Famous Fanclub is a celebration of interactions for early years children with their parents or carers. Using songs and games, props, puppets and stand up comedy Froggy's is unlike any other childrens music event you'll go to.

9, 16 & 23 June, 10.45am – 11.45am

Graveney and Meadow

40 Mitcham Road, Tooting Broadway, SW17 9NA

£8



Sprout Community Arts Affordable Art Show

Sprout Arts Affordable Art Show features paintings, photography, prints and ceramics priced £25 – £500.

9 - 18 June, 11.00am – 5.00pm

Sprout Community Arts

74 Moyser Road, Furzedown, SW16 6SQ

Free, no booking required



TOOTING AND FURZEDOWN



Woodfield Pavilion Just One Thing - Art Exhibition

Art in the Pavilion host their 4th Wandsworth Arts Fringe Community Art exhibition. The Pavilion is filled with an eclectic mix of work from local professional and amateur painters, photographers, etchers, embroiders, knitters and sketchers.

9 - 11, 15 - 18 & 22 - 25 June, 11.00am - 4.00pm

The Woodfield Pavilion

Woodfield Pavilion, 16A Abbotswood Road, Tooting Bec Common, SW16 1AP

Free, no booking required



Fuzion Four Jazz Classical Crossover

Fuzion Four plays uplifting and upbeat arrangements of Latin, jazz standards and light classical pieces. Featuring saxophone (Ollie), cello (Erica), keyboards (Bob) and cajon (James) their music ranges from Gershwin to Miles Davis to Bach.

10 June, 2.00pm - 3.15pm

All Saints Church Tooting

Brudenell Road, Tooting, SW17 8DQ

£6



Pawel Siwczak Sensual and mysterious: The secret world of the harpsichord

Pawel brings the harpsichord alive by exploring the range of sounds and textures available on this versatile instrument. Each piece will be preceded by details of the piece, the composer, the context and the historical period.

11 June, 3.00pm - 4.00pm

All Saints Church Tooting

Brudenell Road, Tooting, SW17 8DQ

Donations, no booking required



The F#Sharp Club The Cream of Tartar Show

Tooting's occasional but notorious cabaret night returns for the festival to present songwriter and multi instrumentalist Jake Rodrigues performing his own musical creations. Expect musicality, humour, participation, strobe lights and scenes.

14 June, 8.00pm - 10.00pm

Graveney and Meadow

40 Mitcham Road, Tooting Broadway, SW17 9NA

£7.50/£3 concessions

TOOTING AND FURZEDOWN



Alison Royce, June Peters and others **Luscious Stories of Abundance**

An evening of entertainment with local storytellers Alison Royce, June Peters and guests. Engaging, sometimes funny, and slightly weird stories told by grown-ups for grown-ups, in the intimate space of the Lady Chapel at All Saints Church Tooting.

15 June, 7.30pm – 9.00pm

All Saints Church Tooting
Brudenell Road, Tooting, SW17 8DQ

Donations, no booking required



Rev Prof June Boyce-Tillman **Community Concert**

This is a celebration of the diverse creativity of our area including songs from a Yoruba tradition, the Baked Bean choir for people with learning difficulties, local primary schools, and soloists from a variety of ages and traditions.

17 June, 6.00pm – 8.00pm

All Saints Church Tooting
Brudenell Road, Tooting, SW17 8DQ

Donations, no booking required



Furzedown Pride **Furzedown Pridestravaganza!**

In celebration of Pride month (June), the neighbourhood of Furzedown will be hosting its very first Pride show, Pridestravaganza! We're bringing together local performers, audacious drag queens and some fantastic LGBTQ+ comedians.

17 June, 7.30pm – 9.30pm

The Furzedown
118 Mitcham Lane, SW16 6NR

£15



Rev Prof June Boyce-Tillman **Feather on the breath of God: An evening with Hildegard of Bingen**

Rev Prof June Boyce-Tillman blends music, story-telling, pictures and meditation together in a one-woman performance introducing this visionary medieval abbess.

19 June, 7.30pm – 9.00pm

All Saints Church Tooting
Brudenell Road, Tooting, SW17 8DQ

Donations, no booking required



TOOTING AND FURZEDOWN



Sprout Community Arts & Wandsworth Welcomes Refugees

Compassion

Wandsworth Welcomes Refugees presents a community exhibition to celebrate the power and meaning of compassion this Refugee Week.

20 - 25 June, 11.00am - 5.00pm

Sprout Community Arts

74 Moyser Road, Furzedown, SW16 6SQ



Free, no booking required



Emma Howarth

A celebration of keyboard instruments

This exciting concert with Emma Howarth, Pawel Siwczak and Simon Gutteridge will see these distinguished players on piano, harpsichord and organ working together in a programme including a variety of solo pieces.

20 June, 7.30pm - 9.30pm

All Saints Church Tooting

Brudenell Road, Tooting, SW17 8DQ



Donations, no booking required



St George's Hospital Charity

Resident Artist Showcase

St George's Hospital Charity's Arts Team host a celebration of the work of their three Resident Artists through an interactive exhibition, intimate performances, arts activities and the display of short films documenting the artists' time on site.

22 June, 5.00pm - 7.00pm

St George's University Hospitals NHS Foundation Trust

Blackshaw Road, SW17 0QT

Free, booking required



Katie Rose

Midsummer Melodies

Katie Rose, a South London-based singer, composer and conductor, leads a magical evening of song with her choirs to soothe, touch and inspire in the heart of summer.

22 June, 7.30pm - 9.30pm

All Saints Church Tooting

Brudenell Road, Tooting, SW17 8DQ



Donations, no booking required

TOOTING AND FURZEDOWN



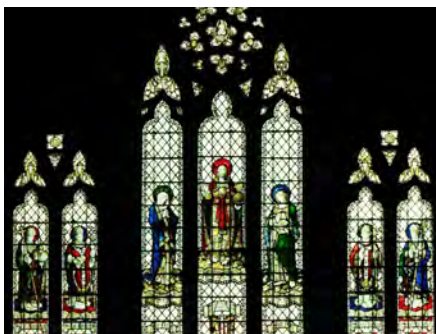
Approx Fluid Table

This event focuses on creating a unique 'table', a new space where people, food, and art come together in the form of exhibitions, performances and events.

23 June, 11.00am – 12.00pm, 1.00pm – 2.00pm,
3.00pm – 4.00pm, 5.00pm – 6.00pm

The Living Room Place Venue

19 Thrale Road, Furzedown, SW16 1NS
£20/£12 concessions



Revd Prof June Boyce-Tillman & Susanna Schuler

Sounds of Sanctuary

Relax in the beautiful environment of the Lady Chapel at All Saints Church Tooting, where a single instrument playing meditative music will give visitors a chance to take some time for contemplation and meditation.

24 June, 10.00am – 11.00am

All Saints Church Tooting

Brudenell Road, Tooting, SW17 8DQ

Donations, no booking required



Senior Street Sextet Jazz Concert

Modern Jazz standards, Latin and Blues music from Senior Street Sextet.

24 June, 7.00pm – 9.30pm

All Saints Church Tooting

Brudenell Road, Tooting, SW17 8DQ

Donations, no booking required



Wandsworth Music Chamber Music Recital

Wandsworth Music bring together chamber music ensembles from their Music Academy and Schools in the borough, for an evening of extraordinary talent. From String Quartets to Sax Quartets, come and watch a varied programme and an array of talent.

23 June, 6.30pm – 7.30pm

All Saints Church Tooting

Brudenell Road, Tooting, SW17 8DQ

Free, booking required

TOOTING AND FURZEDOWN



Work and Play Scrapstore Hazelfest

Hazelfest is a free afternoon of fun for all the family, with live performances, football skills, and over a dozen activity stalls showcasing upcycling - all taking place on the green outside Hayesend House on Blackshaw Road.

25 June, 2.00pm – 5.00pm

Hazelhurst Estate

13 Blackshaw Road, Tooting, SW17 ODA

Free, no booking required



Hallomai Dance Joy is Ours

Hallomai Dance explores what makes us joyous in our daily lives in outdoor interactive performance, Joy is Ours. Watch as four dancers play, connect and get tangled-up in a GIANT scrunchie in this fun pop-up performance. Dance with us!

25 June, 2.00pm – 5.00pm

Hazelhurst Estate

13 Blackshaw Road, Tooting, SW17 ODA

Free, no booking required



Generate Puppet Fun

Join Generate artists at Hazelfest for an interactive, creative, fabulous stick puppet making workshop, with all the glitter and sparkles you'll need to make them awesome!

25 June, 2.00pm – 5.00pm

Hazelhurst Estate

13 Blackshaw Road, Tooting, SW17 ODA

Free, no booking required



Oily Cart The Lost Feather

The magical, musical, sensory Cart is wheeling its way to Hazelfest, delivering Oily Cart's unique brand of multi-sensory mayhem, designed for all children, especially for disabled children and their families.

25 June, 3.00pm – 3.45pm

Hazelhurst Estate

13 Blackshaw Road, Tooting, SW17 ODA

Free, no booking required





Wandsworth Arts & Culture Service Happiness Banners

Working in partnership with Royal College of Art, three primary schools in Wandsworth have worked with Artist Ella Shiraz to create artwork on the theme of positive mental health. Their final works are displayed on public banners outside of Wandsworth Town hall throughout WAF.

9 - 25 June, all day.

Wandsworth Town Hall Railings

Wandsworth High Street, London, SW18 2PU

Free, no booking required



Pegasus Opera Company Windrush Anniversary Concert

Pegasus Opera's 'Windrush 75th Anniversary Concert' - a musical performance featuring top classical singers with music by composers of African, Caribbean and Asian heritage with gospel, opera, musical theatre and songs inspired by the black diaspora.

9 June, 7.30pm - 9.30pm

National Opera Studio

2 Chapel Yard, Wandsworth High Street, SW18 4HZ

£18/£5 concessions



Nova Grace Productions Unlocked

From bedroom to stage, four contemporary dancers explore life in and out of lockdown - loss, isolation, confusion, trepidation, masks, vaccines... and reunion. Let's not sweep it under the carpet.

10 June, 2.30pm - 4.00pm & 7.00pm - 8.30pm

National Opera Studio

2 Chapel Yard, Wandsworth High Street, SW18 4HZ

£16/£13 concessions





Antonia Rolls
Addicts and Those Who Love Them
Exhibition

Behind every addict is someone traumatised by loving them. An exhibition of portraits and words from, around, with, and about addiction.

13 - 17 June, 10.00am - 4.00pm
Wandsworth Town Library
 11 Garratt Lane, SW18 4AQ

Free, no booking required



Ripple Arts London
Print-making workshops for families

Introduction to print-making for all the family! Make your own print with help from artist printmakers, Ripple Arts London.

14 & 21 June, 11.00am - 1.00pm
 17 June, 2.00pm - 4.00pm
Wandsworth Town Library
 11 Garratt Lane, SW18 4AQ
£15



Wandsworth Street Concerts
Britten Canticles

Wandsworth Street Concerts presents Britten's Five Canticles, songs spanning the sacred and secular, sung by Richard Robbins (tenor), accompanied by Chris Jeanes (piano).

14 June, 8.00pm - 9.30pm
St Anne's Church, Wandsworth
 182 St Ann's Hill, SW18 2RS

Donations, no booking required

BOOK ONLINE:
WANDSWORTHARTSFRINGE.COM
OR CALL OUR
BOX OFFICE ON
08442 439 475

Lines open Monday to Friday, 10am to 8pm, and daily during the festival. Calls cost 7p per minute plus your phone company's access charge.



Jataneel Banerjee

Gaṅgā

A chamber opera in Sanskrit. The legend of Gaṅgā is a story of love, promise and heartbreak from Mahabharata. She is a powerful yet a helpless celestial river goddess whose womb becomes the medium to fulfil the higher purpose of gods and men.

17 June, 6.00pm – 7.30pm

National Opera Studio

2 Chapel Yard, Wandsworth High Street, SW18 4HZ

£15/£12 concessions



Kathy Hall

Carp Leaps over the Dragon Gate

A 6-minute Peking Opera interlude based on a Chinese legend and a 40-minute workshop on the principles and practices of Peking Opera and Peruvian Dance movements, led by Kathy Hall and Jose Navarro.

18 June, 2.00pm – 3.10pm & 4.00pm – 5.10pm

National Opera Studio

2 Chapel Yard, Wandsworth High Street, SW18 4HZ

£15/£12 concessions



WANDSWORTH SCHOOLS: LIVE!

WAF Schools Music Summer Showcase

Wandsworth Music in partnership with Wandsworth Arts & Culture Service presents an exciting musical showcase bringing together a diverse range of performances by schools from across the borough, united in the common goal of sharing their love of music and passion for performance.

13 June, 7.00pm - 8.30pm, Free - booking required

Happiness: Live!

Primary Schools from across Wandsworth come together for a truly spectacular and creative showcase celebrating Happiness. With theatre, visual arts, animation and dance, come and marvel at Wandsworth's abundance of young talent!

14 June, 6.30pm - 8.00pm, Free - booking required

Wandsworth Civic Suite

Wandsworth High Street, London,
SW18 2PU



Petra Haller

Wandsworth Arts Fringe Tap Dance Days

Tap Dancer Petra Haller will show the breadth of her work in genres from Jazz standards to Avant Garde during her one-week run at National Opera Studio.

Day One: Petra Haller Trio

A night of jazz standards and tunes by some of Haller's favourite composers, Thelonious Monk, Charles Mingus, and Duke Ellington, with Piano, Double Bass and Tap Dance.

19 June, 6.45pm – 8.00pm, £15/£8

Day One: Petra Haller Trio

A night of jazz standards and tunes by some of Haller's favourite composers, Thelonious Monk, Charles Mingus, and Duke Ellington, with Piano, Double Bass and Tap Dance.

19 June, 6.45pm – 8.00pm, £15/£8

Day Two: Multidisciplinary Event

Enjoy a multimedia performance featuring an abstract video installation by Egle Saka, as well as some of London's finest improvising musicians and spoken word.

20 June, 7.00pm – 8.00pm, £15/£11

Day Three: Petra Haller/Loz Speyer/Meg Morley

Haller, Speyer, and Morley will take you on an improvised journey, a musical conversation stretching rhythm and time, drawing from their combined experience in jazz, avant-garde and classical music.

21 June, 6.45pm – 8.00pm, £15/£11

Day Four: Petra Haller & Meg Morley

Haller and Morley present their debut album 'The Shoulders I Stand On' at Wandsworth Arts Fringe as part of their album release tour.

22 June, 7.00pm – 8.00pm, £15/£11

Day Five: Film as Visual Score for Improvised Music

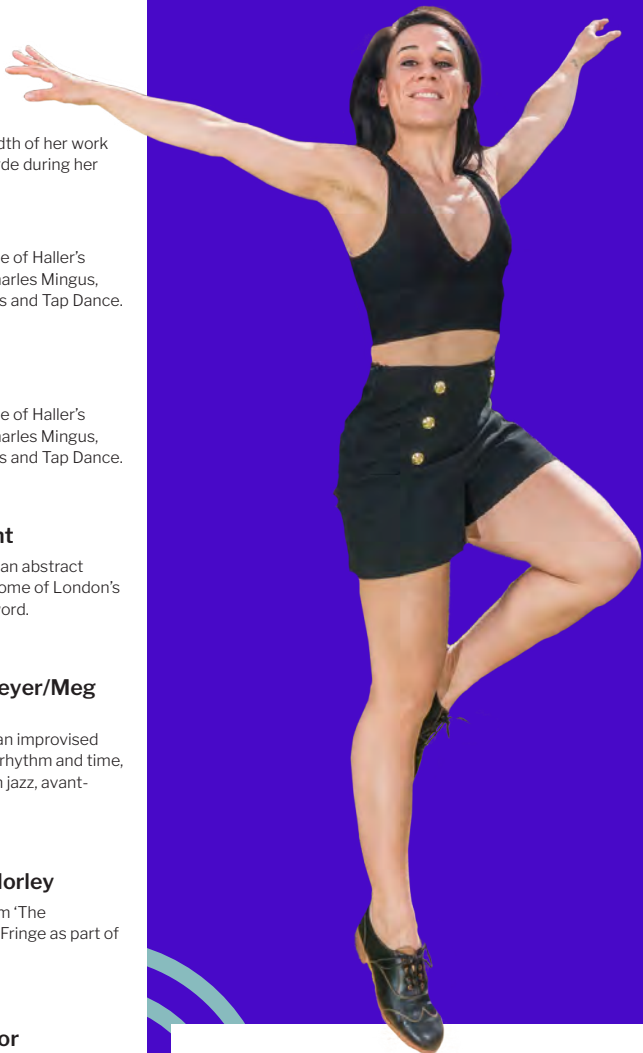
Petra Haller is joined by some of London's finest improvising musicians to create a live musical landscape inspired by experimental film.

23 June, 7.00pm – 8.00pm, £15/£11

Day Six: WAF Partner Night

Artists from many different genres come together to make music and create an improvised mash up jam. A chance for WAF artists to shine, unite and celebrate each other.

24 June, 6.45pm – 8.00pm, £15/£11



Day Seven: Total Immersion Day

The day will start with a Tap talk, followed by a jazz quintet. Petra Haller and Meg Morley Duo will play material from their debut album 'Shoulders I Stand On' with improvisations, followed by a freely improvised concert, featuring some of London's best improvisers, and a Q&A.

25 June, 11.00am – 7.00pm, See website for pricing.

National Opera Studio

2 Chapel Yard, Wandsworth High Street,
London, SW18 4HZ



Wandsworth Street Concerts **Bach Leipzig Cantatas II - Jesu Joy of Man's Desiring**

Zimmermann Band presents the second concert in their series of Cantatas by J.S. Bach on the 300th anniversaries of their premieres. The concert will conclude with the tune - Jesu, Joy of Man's Desiring.

21 June, 8.00pm - 9.30pm
St Anne's Church, Wandsworth
182 St Ann's Hill, SW18 2RS

Donations, no booking required



Alice d'Lumiere **Speaking Out and Fitting In!**

Striking performance poetry, disarming comedy, with flashes of cabaret and aerial burlesque. A celebratory show, in which Genderfluid performer Alice d'Lumiere explores her wonderful, counter-intuitive position; striving to fit into another gender.

24 & 25 June, 7.00pm - 8.30pm
National Opera Studio
2 Chapel Yard, Wandsworth High Street, SW18 4HZ

£6/£3 concessions



WAF in YOUR Living ROOM



Anna Vasilieva **Cosmic Bookstore**

This virtual exhibition tells an exciting story of a space-themed bookstore that resembles our solar system. The tale comes to life through the main characters who explore a mystical world of books and space.

Ongoing from 9 June

Free, no booking required



Garry Roost **Warhol: Bullet Karma**

A dark, witty take on American Pop Art icon Andy Warhol, and the woman who shot him, Valerie Solanas. 'Warhol: Bullet Karma' is a solo show stuffed full of characters from Warhol's artistic heyday.

Ongoing from 9 June

£6/5 concessions



XAP **A Wandle Wonder Wander**

A river walk with a difference. Wander along the Wandle, following our mixed-reality, geolocation trail with your mobile device. Discover sights, sounds and quirky animated artworks, which reveal the wonder of our local heritage.

Ongoing from 9 June

Free, no booking required



London Independent Story Prize **Online Creative Writing Workshops with Amal Chatterjee and Jessica Andrews**

Open to all levels of writers, empower your writing journey and meet with fellow writers!

11, 13, 15 & 25 June, see website for times
Free, booking required

In person (hybrid) with Jessica Andrews:
25 June, 11.00am

Royal Academy of Dance
188 York Road, SW113JZ

Free, booking required